



Global
Roadway
Maintenance



“ONE CALL DOES ALL!”

EQUIPMENT & RATES (Contract Price On Review optional)

AntiIce Trucks: Roadway & Parking lots	P.O.R.	Bobcats - Hydraulic Blade and Buckets	\$100/hr
AntiIce Trucks: Sidewalks & Driveways	P.O.R	Six Yard Sand Trucks with Belly Plows	\$165/hr
Snow Removal Trucks -4x4/hyd. Blades	\$ 105/hr	Two Yard Sanding Trucks 4x4/hyd. Blade	\$135/hr
Hand Shovelling Crews: Sidewalks/Driveways \$35 per man hr.			
Trucking (haulaway) & Loader (plus \$15 per load dumping fee) \$230/hr			
<i>Nominal Stand-By Fees are required to provide Income Guarantee for Reliable & Skilled Labour to commit to On Call 24/7 Snow Removal Program</i>			



ANTIICE – PROACTIVE
*Eliminates Liability
Economical / Cost Effective
Enhanced Environmental Acceptance*



TRADITIONAL – REACTIVE
*Negligent Liability
Litigation / Customer Perception
Contributes to Environmental Detriment*



ANTIICE PRODUCTS SPREADERS SPRAYERS..Call Us!

- 20 Ltr. Pail Anti-Ice Liquid \$32.00 each (plus refundable deposit on pail)							
- 22.7 Kg. (50 Lb.) Bag Anti-Ice Flake with coloured grit							
1 Bag	5 Bags	10 Bags	15 Bags	20 Bags	25 Bags	50 Bags	
						(Pallet)	
\$ 45.	\$ 43.	\$ 39.	\$ 37.	\$ 35.	\$ 33.	\$ 23.	



Contractor Leasing/Purchasing: Spray Rigs (Road & Sidewalk applicators), Storage Systems (200 to 5,000 litre capacity), Bulk AntiIce Sales (also Pre-Wetted sand), and Non-Slip Adhesive Strips
All our products are PNS certified and are the least damaging to environment and property. See website for details.

Advantages for Contractors using the AntiIce

Program:

- √ Limits your liability (reduces your insurance costs)
- √ Enhances client acceptance, giving you a competitive advantage.
- √ Satisfies Environmental & Government initiatives to find alternatives to traditional methods of ice and snow control

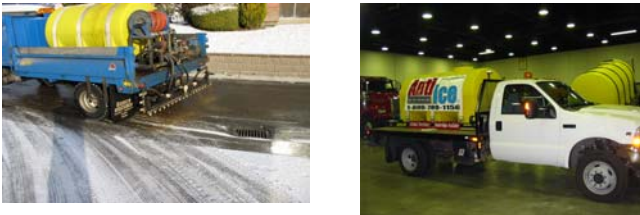
"Ma & Pa" spray rigs for Gator or truck



The AntiIce Program fosters Client Acceptance by enhancing:

- √ Safe passage for customers (shopping carts, etc)
- √ Property preservation – pavement & sidewalk damage, grass & foliage, etc.
- √ Employee health & safety (reduction in W.C.B. claims)
- √ Prevention of costly slip and fall accidents (litigation)

Full sized spray rigs



Effectiveness:

- √ Expedites snow removal
- √ Less wear and tear on equipment
- √ No worries of snow compaction into ice
- √ Global's AntiIce chosen by ProTran on new bridge

Hidden cost savings:

- √ no sand/salt expenses or tracking /salt residue
- √ reduces spring clean-up & eliminates dust problems
- √ no catch basin clean out
- √ less abrasion of pavement/line paint

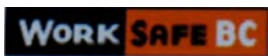
daniel@globalantiice.ca **www.GlobalAntiIce.ca** 250-860-3693

GRM Inc. Group of Companies provide **YEAR ROUND SERVICES!**

garth@grminc.ca **www.GRMinc.ca** 250-859-2653

DECK SERVICE	MATERIAL HAULING	SNOW / ICE CONTROL	SPRAY EQUIPPED	WASTE MANAGEMENT
Equipment Pallet Stock Storage Containers Site Office Units	Landscape Materials Construction Materials Nursery Stock	Roadways/Parking Lots Sidewalks Proactive Antiicing Plowing/Sanding Haulaway Commercial/Residential	Dust Control Street Flusher Noxious Weed Control Fire Suppression	Roll-Off Bins Recycle Container Demolition Construction Commercial/Residential

GLOBAL ROADWAY MAINTENANCE INC. is covered by:



Workers Compensation Board
(#708563 AA)



ECONOMICAL
INSURANCE
GROUP

Liability Insurance with \$5,000,000 coverage.

REFERENCES:

City of Kelowna, SD-23, Regional District, ICBC, Interior Health Authority, FortisBC, Telus, WSI-BLJC, OUC/UBCO, Kelowna Condo Services, Okanagan Strata Management, Colliers International, Associated Property Management, Coldwell Banker, Costco, Superstore, Rona, Spall Plaza, Capri, Landmarks, and many other satisfied clients.